

ADVANTAGES OF INTERVENTIONAL UROLOGY PROCEDURES



Office based and minimally invasive



Home in the same day



Quicker recovery times



Very low complication risks



No general anesthesia needed



Multi-disciplinary approach



Ease of scheduling



134 Route 73, Suite E
Voorhees, NJ 08043
Tel / Fax: 856-437-5814
njuvoorhees@ircenters.com



312 Applegarth Rd., Suite 101
Monroe, NJ 08831
Tel / Fax: 732-484-4397
njumonroe@ircenters.com



www.ircenters.com

Fold-Line

Fold-Line

OUR TEAM

Our Vascular Interventional Radiologists are National Leaders & Experts in the field of Embolization. The team has led numerous clinical trials, pioneering novel techniques for the treatment of several medical conditions, specifically evaluating Embolization and its application for many novel medical applications. For more information about our expert physicians, please visit our website.



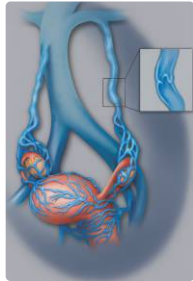
IR CENTERS™
LEADING MINIMALLY INVASIVE HEALTHCARE

INTERVENTIONAL UROLOGY



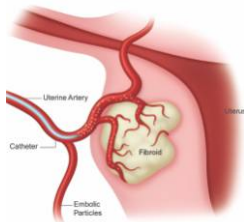
PELVIC CONGESTION SYNDROME

- ✓ Pelvic congestion syndrome is a medical condition that causes chronic pelvic pain. The condition is thought to be due to problems with the enlarged veins in your pelvic area. Women of childbearing age who have had more than one pregnancy may have the highest risk of pelvic congestion syndrome.
- ✓ Our team performs an office-based minimally invasive procedure called Ovarian Vein Embolization. This technique allows the physician to block, or embolize, the faulty vein by using X-ray to guide a catheter through the venous system.
- ✓ Once the vein is blocked, the damaged vein is shut off and the blood flow is redirected to the surrounding, healthier veins. Pressure is eased on the abnormal vein, restoring normal function and eliminating pain. The patient is sent home shortly after the procedure and is back to normal activities the next



UTERINE FIBROID

- ✓ One of the most common causes of pelvic pain and bleeding are uterine fibroids, sometimes called “fibroid tumors.” These benign fibroids grow either inside or outside the uterine wall.
- ✓ Our team performs an office-based, minimally invasive procedure called Uterine Fibroid Embolization (UFE). This technique allows the physician to block, or embolize, the artery feeding the fibroids using X-ray to guide a catheter through the arterial system.
- ✓ Tiny particles are then injected through the catheter and into the artery that feeds the fibroids, cutting off their blood supply. With the blood supply blocked, the fibroids begin to shrink, but the uterus and ovaries are spared.
- ✓ The patient is sent home shortly after the procedure and is back to normal activities within one week.

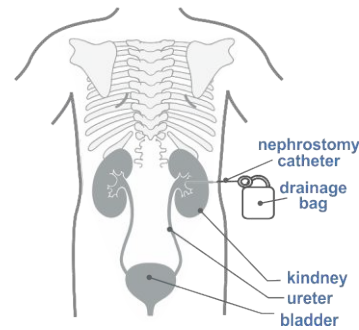


Fold-Line

NEPHROSTOMY TUBE

- ✓ Sometimes the flow of urine is blocked due to stones, infection, congenital abnormalities or trauma. To restore the flow, a nephrostomy tube (small catheter) can be placed through the skin of the lower back into the kidney. As a result, urine will then drain into a small bag connected to the tube. A nephrostomy tube may be in

Nephrostomy (back view)

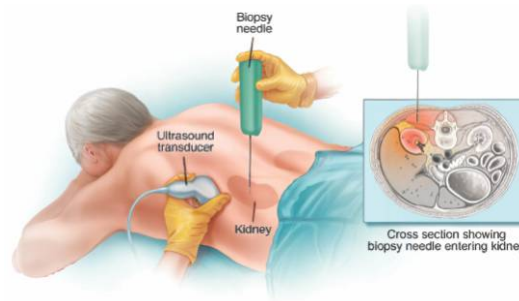


SUPRA PUBIC CATHETER

- ✓ A suprapubic catheter is a hollow flexible tube that is used to drain urine from the bladder. It is inserted into the bladder through a cut in the tummy, a few inches below the navel (belly button). This is done under a local anesthetic or a light general anesthetic.

IMAGE GUIDED BIOPSY

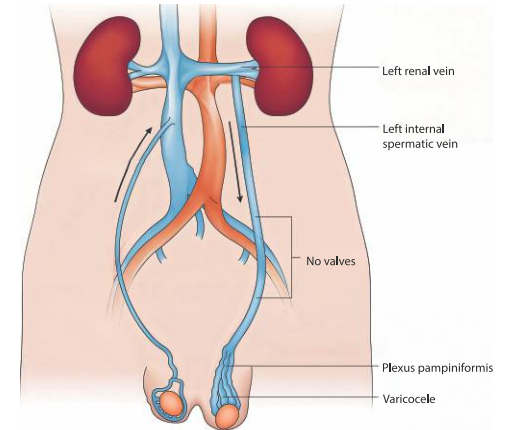
- ✓ A biopsy is a minimally invasive method of sampling tissue to determine if it is benign, malignant, or infectious. An image-guided biopsy uses imaging technology that enables us to safely insert needles into hard-to-reach places in the body, such as the lungs, kidneys, liver, lymph nodes, and the bones.



Fold-Line

VARICOCELE

- ✓ The varicose vein – very similar to those located on legs – happens when the vein valve fails and blood pools, enlarging the veins around the testicle and causing a varicocele. When this condition occurs, not only does it cause infertility, but it may also cause pain and testicular atrophy
- ✓ Our team performs an office-based minimally invasive procedure called Varicocele Embolization. This technique allows the physician to block, or embolize, the faulty vein by using X-ray to guide a catheter through the
- ✓ Once the vein is blocked, the damaged vein is shut off and the blood flow is redirected to the surrounding, healthier veins. Pressure is eased on the varicocele, restoring normal function and eliminating pain. The patient is sent home shortly after the procedure and is back to normal activities the next day.



KIDNEY TUMOR OR ANGIOMYOLIPOMA (AML) EMBOLIZATION

- ✓ Embolization is a minimally invasive treatment, which is usually used to treat benign (non-cancerous) masses in the kidney.
- ✓ During an embolization procedure, small particles are injected through a catheter into a mass. These particles block blood flow to the mass, taking away its supply of oxygen and nutrients. This causes the mass to die and shrink.